

# ISUZU

# FORWARD



**4 x 2 RIGID**  
GVW 19,000kg

**FVR**  
**240**

**FVR**  
**300**

**EURO 3**

\*Applicable to FVR34UU-ST2

**B10**  
— DIESEL —  
COMPATIBLE

**ABS**

**FREE**  
**SERVICE CAMPAIGN**  
 **UP TO 100,000km\***  
\*Terms and Conditions apply.  
**ISUZU**

**WARRANTY**  
**3**  
YEARS OR  
100,000KM  
whichever comes first

**ISUZU**  
**DOCTOR**  
**MOBILE**  
**24**  
HOUR ASSISTANCE

Reliable support with  
round-the-clock  
business operation.



1-800-88-8000



# PERFORMANCE

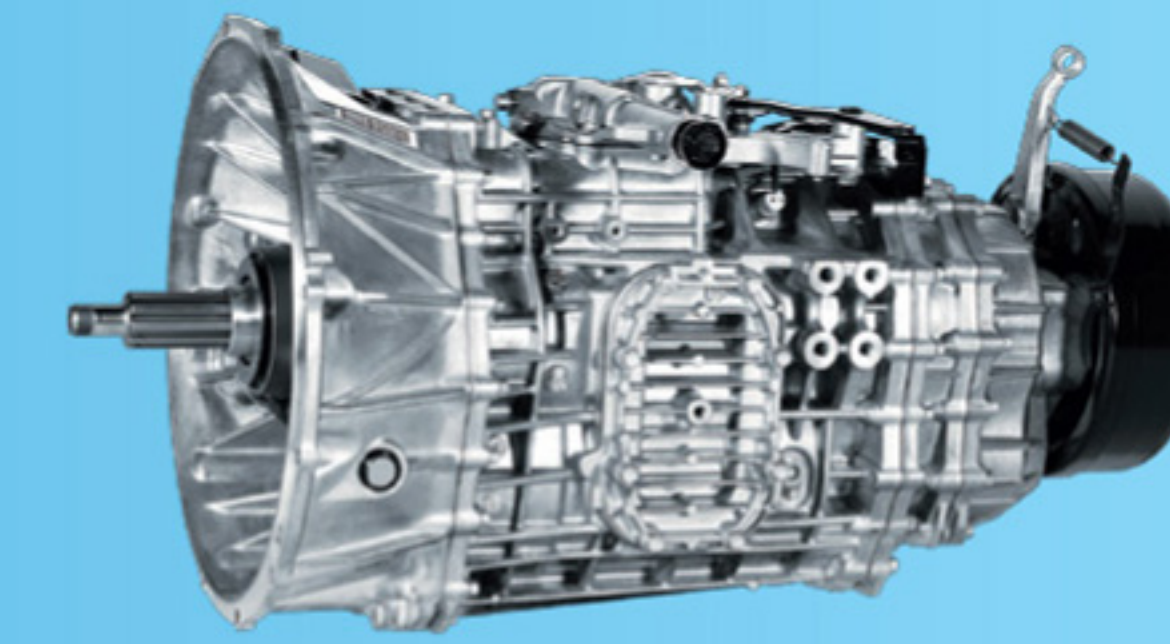


## FVR 240 6HK1-TCN

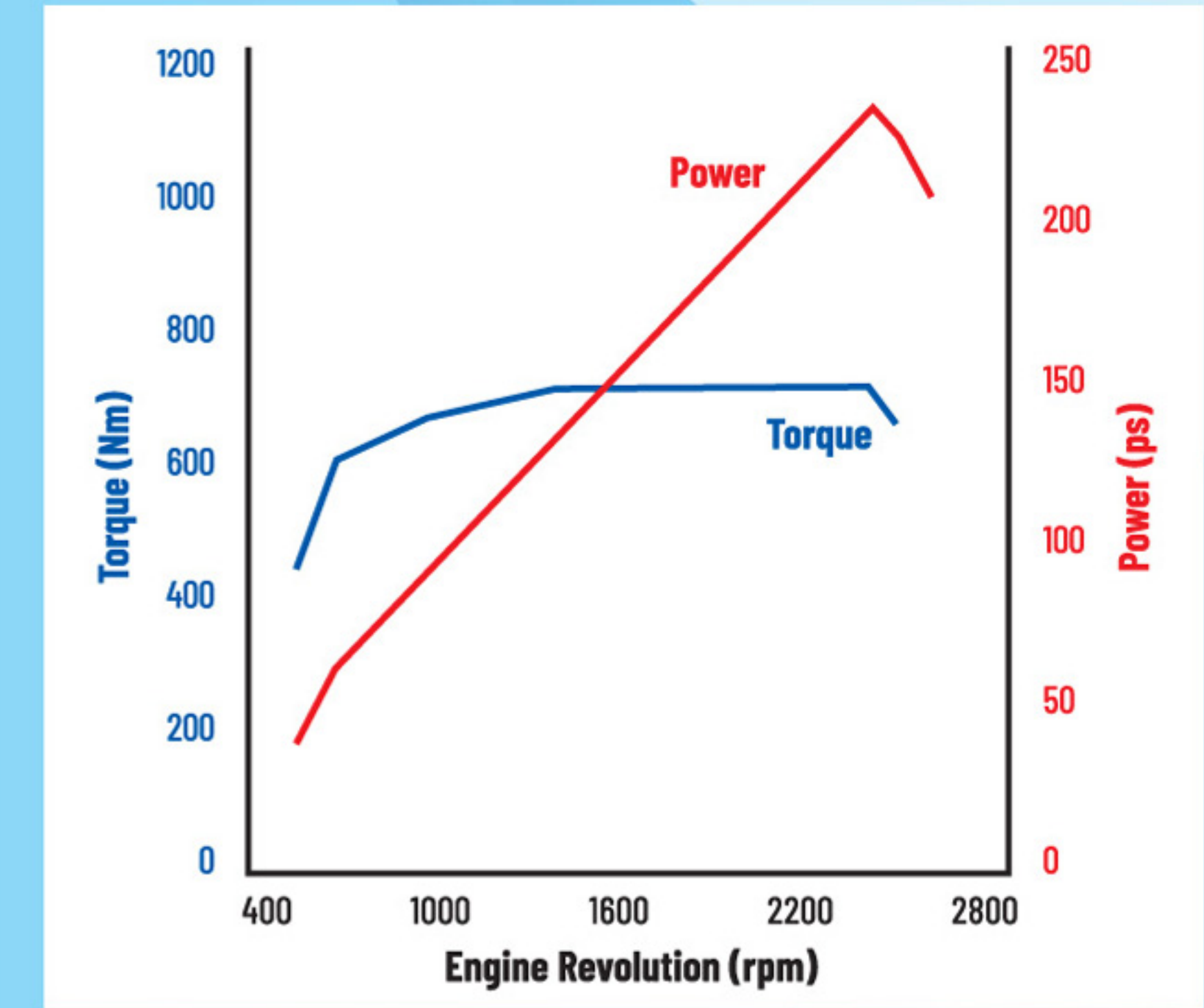
Displacement: 7,790cc  
 Max. Output (Gross): 240ps @ 2,400rpm  
 Max. Torque: 706Nm (72kgm) @ 1,450rpm

**240PS**  
Max Power

**706Nm**  
Max Torque



MZW6P /  
6-Speed Manual Transmission.



## FVR 300 6HK1-TCS

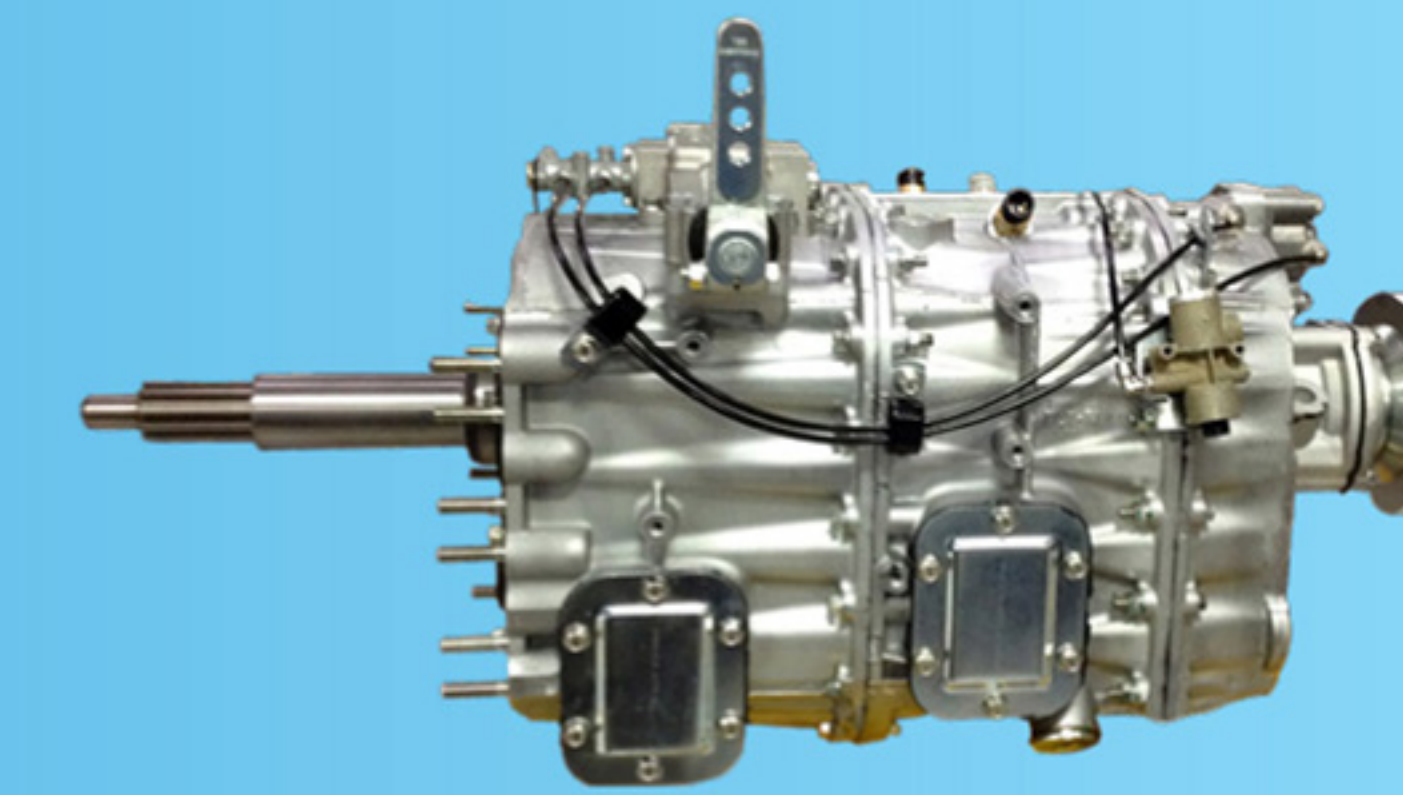
Displacement: 7,790cc  
 Max. Output (Gross): 300ps @ 2,400rpm  
 Max. Torque: 986Nm (100kgm) @ 1,450rpm

**300PS**  
Max Power

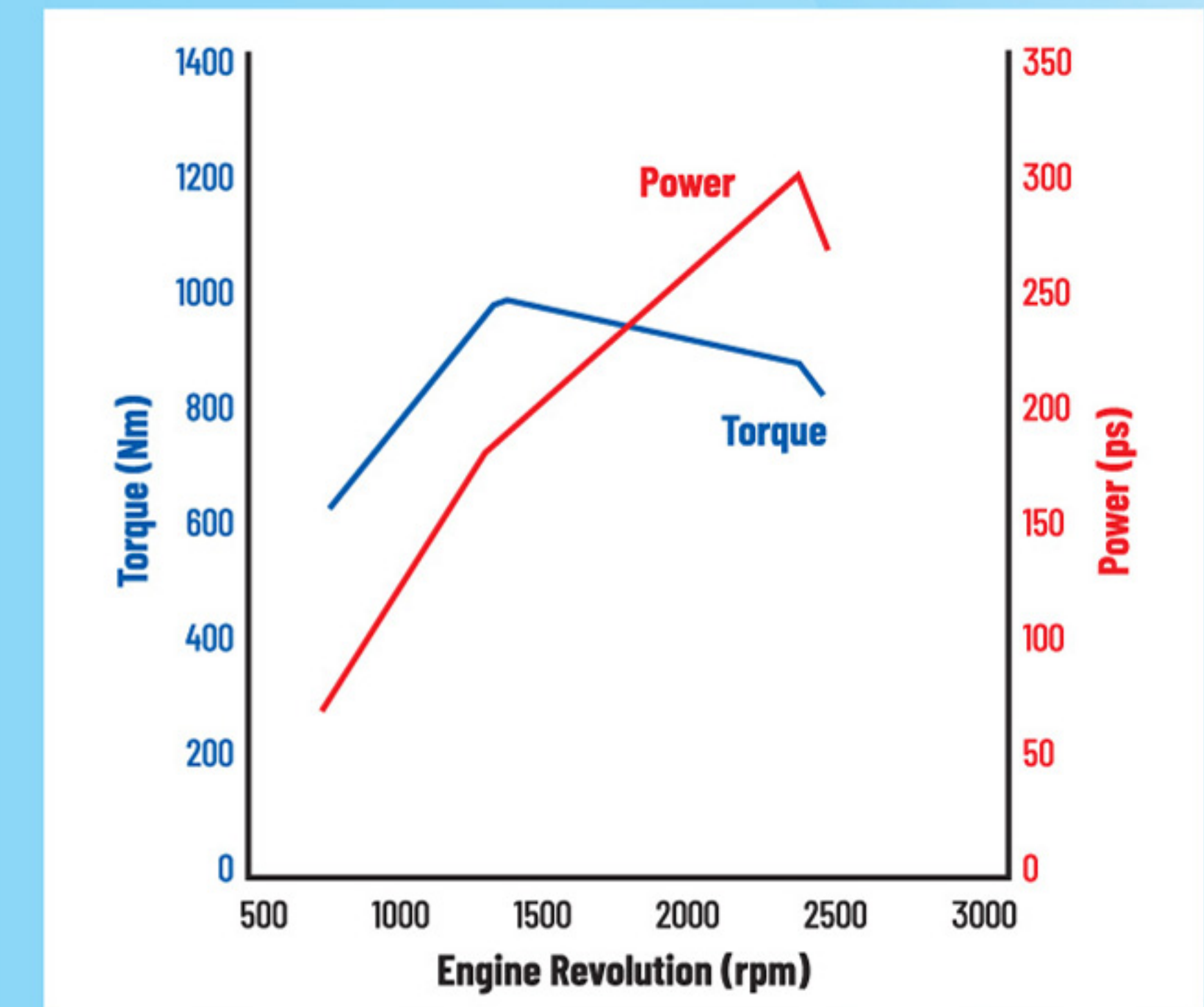
**986Nm**  
Max Torque



**EURO E**



Eaton ES11109 /  
9-Speed Transmission.



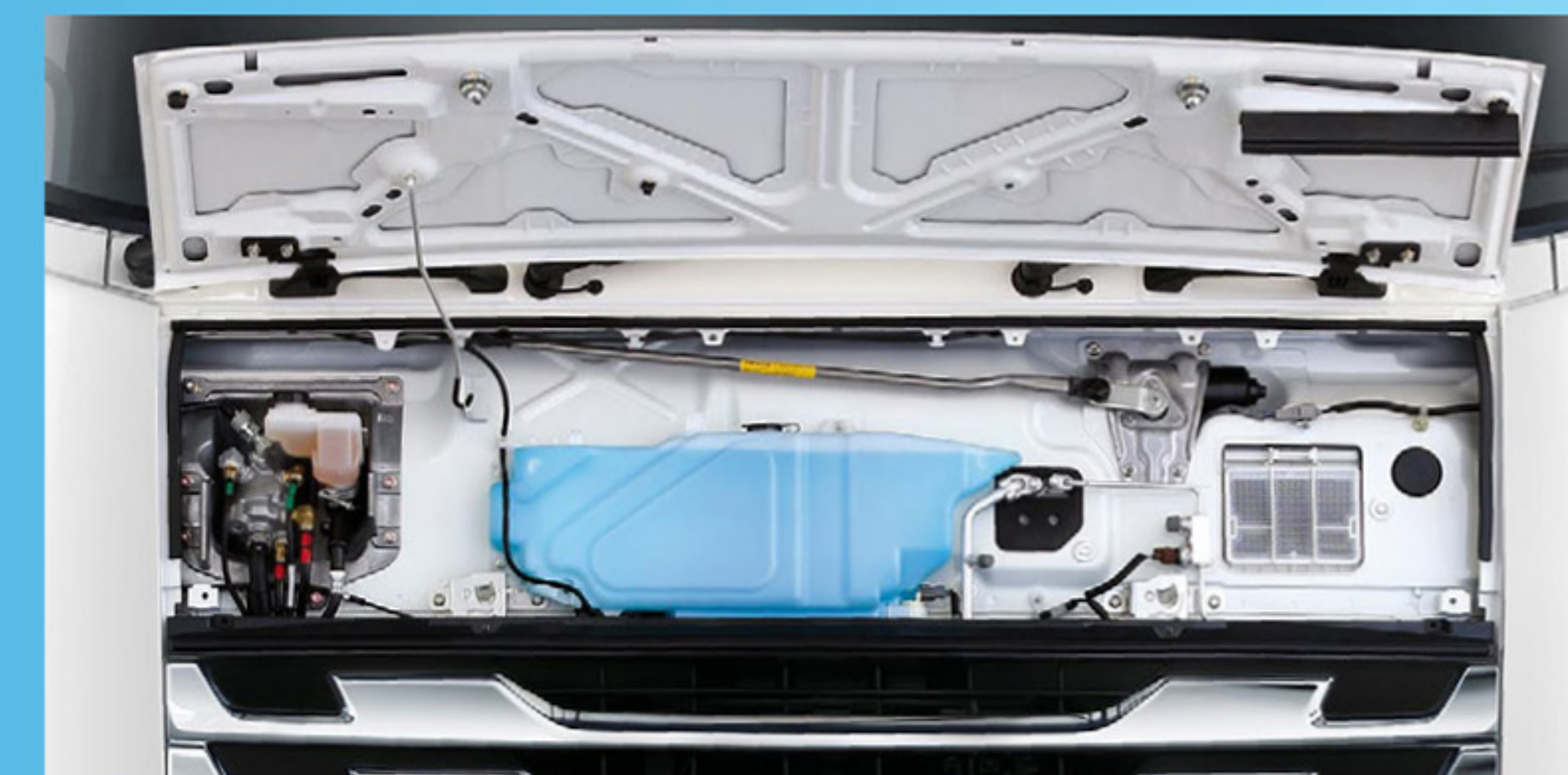
# USEFUL FEATURES



Rivetless wider chassis for greater ease of body-building installations.



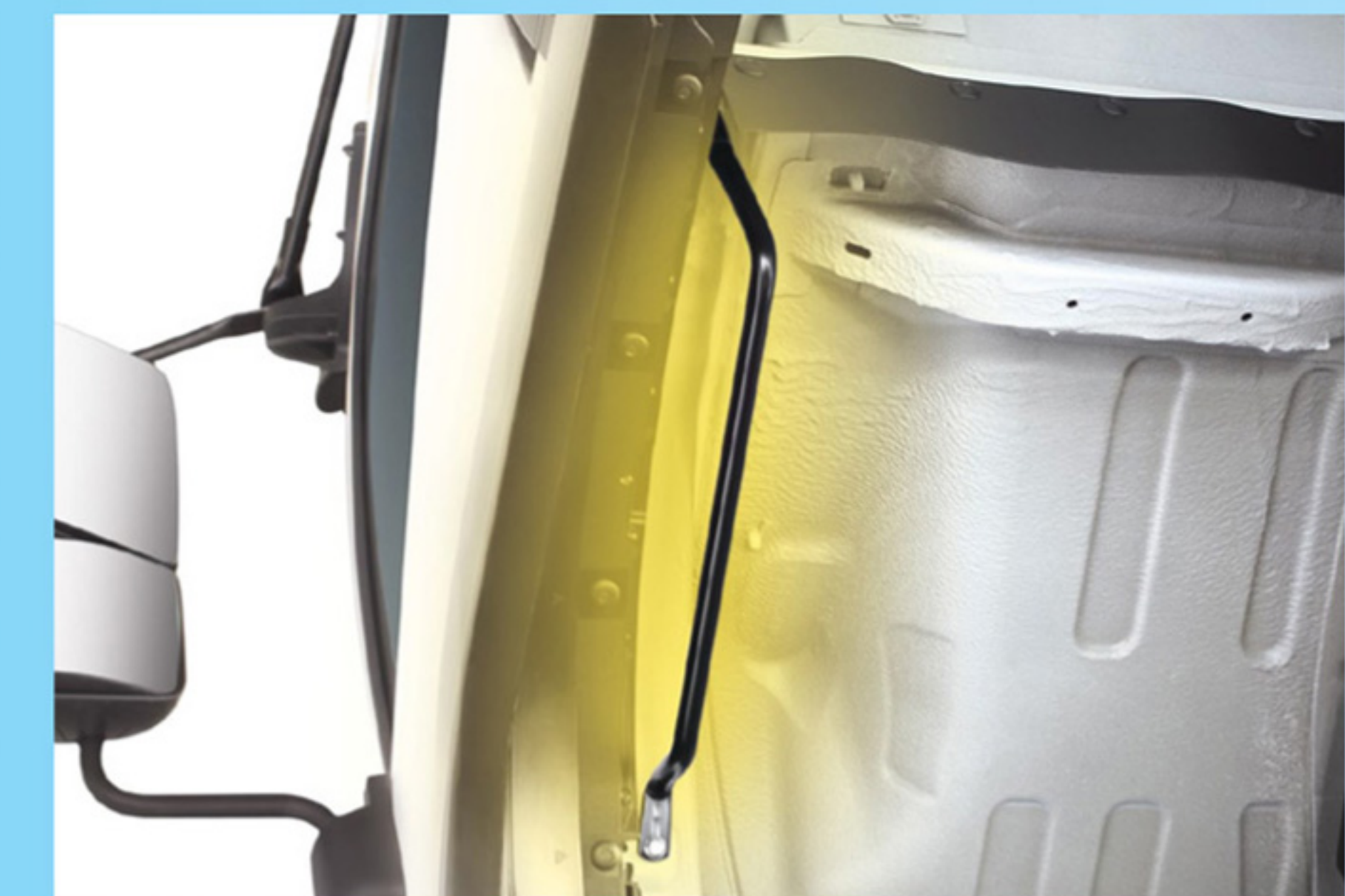
Bigger and durable aluminium alloy fuel tank with lockable cap (Applicable to FVR34UU-SD & FVR34UU-ST2).



Quick access panel. Designed for convenience, inspecting or replacing clutch fluid, wiper fluid and cabin air filter can be done quickly and safely.



Bigger rear axle for higher load capacity (13 ton).



Cabin tilting grip assist.



Small relay to avoid damage during flood.





Ergonomic instrument panel design with ample storage compartments.



More flat area for easy access to bed.



New digital meter with enhanced visibility on important information.



Air suspension driver's seat with resting bed and a full-trim cabin interior.

**FOR SAFETY, COST-SAVINGS AND THE ENVIRONMENT**

**ISUZU**



**Technology**

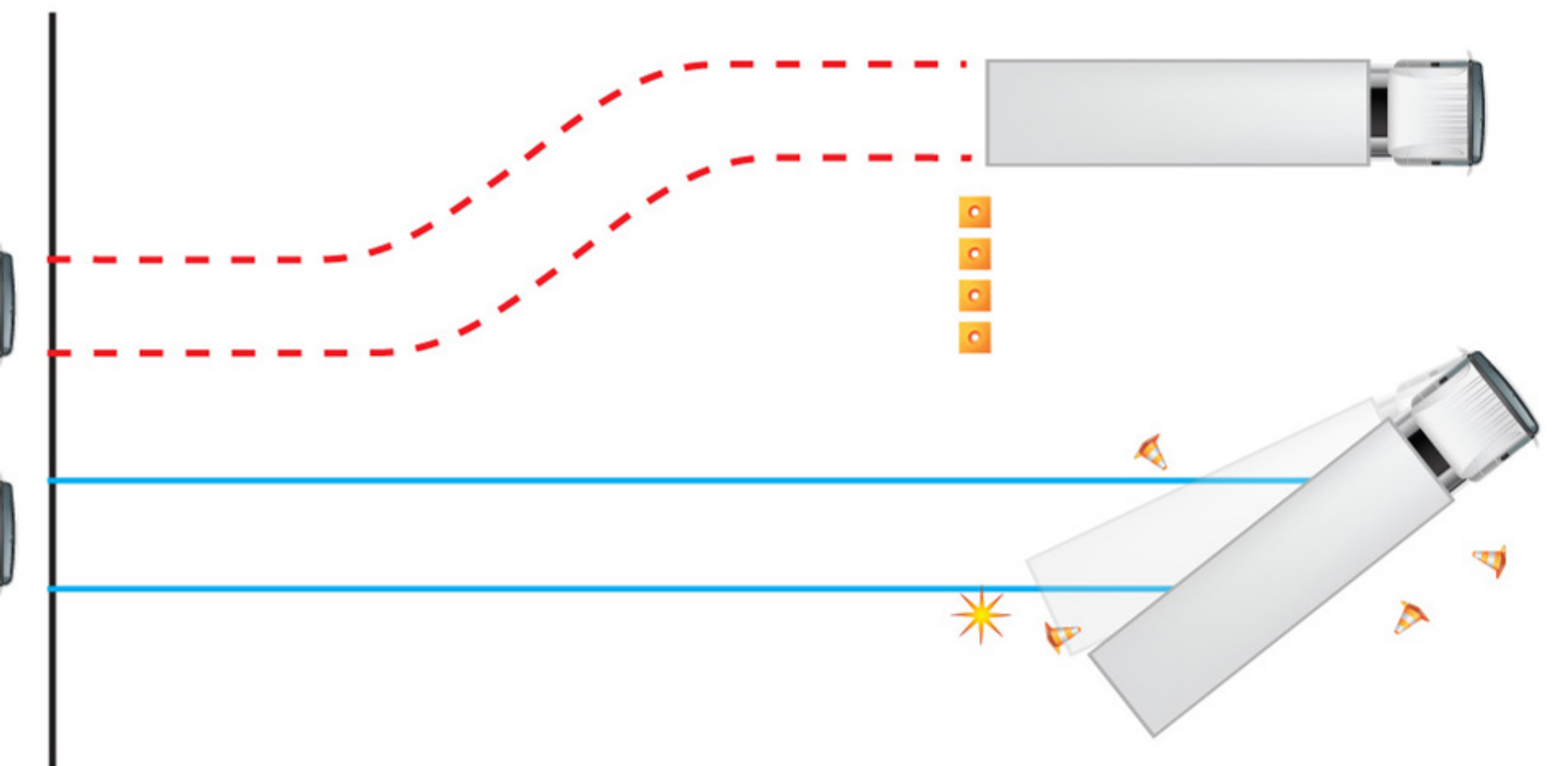
**For truly global design, Isuzu creates products on the basis of strong conviction in its mission.**

Commercial vehicles and diesel engines must meet common global standards of performance and quality. For example, state-of-the-art environmental performance brings real benefits only when taken beyond national borders and is not limited to Japan. For this reason, Isuzu has shifted its development focus from the domestic market to the idea of global design. Environmental regulations in individual countries are no longer a factor as Isuzu develops diesel engines meeting future regulations of all markets worldwide and creates unique global strategy vehicles in the heavy-, medium- and light-duty segments as well as pickup trucks. "Gaining the trust of people everywhere" is the development philosophy. This, in turn, is supported by the base concept of "SEE Technology," or the idea of pursuing technological excellence in the three critical areas of Safety, Economy and Environment.

**With ABS**



**Without ABS**



Anti-Lock Braking System (ABS) (Applicable to FVR34).



Save environment and cost with "S-Cam" auto adjuster full air brakes. B10 Diesel compatible.



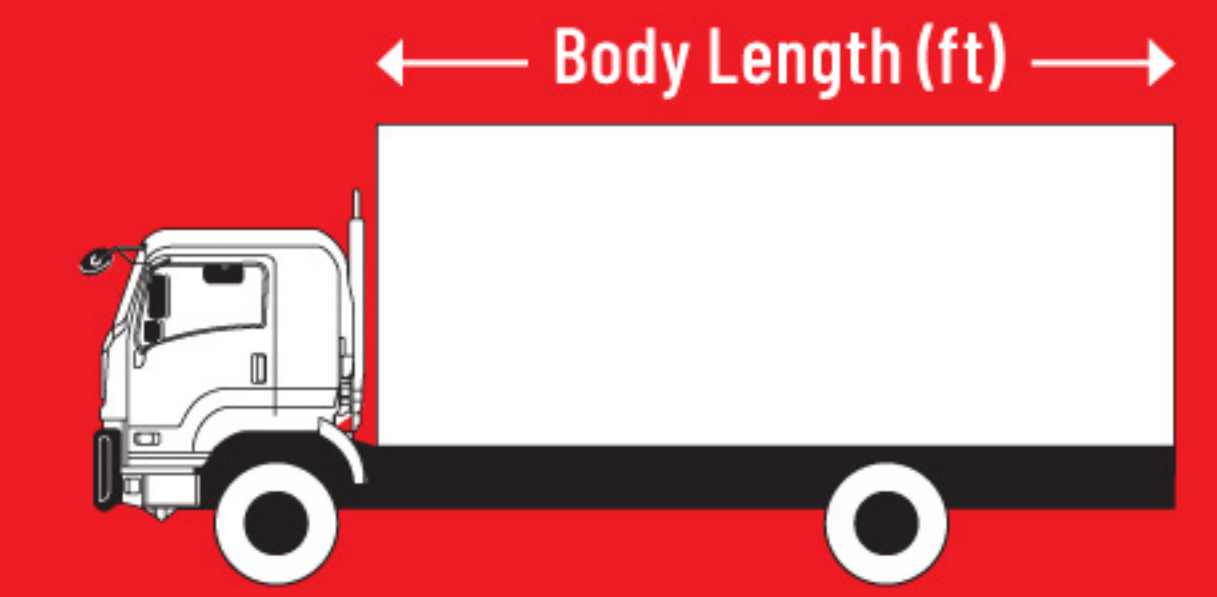
# SPECIFICATIONS

## FVR240

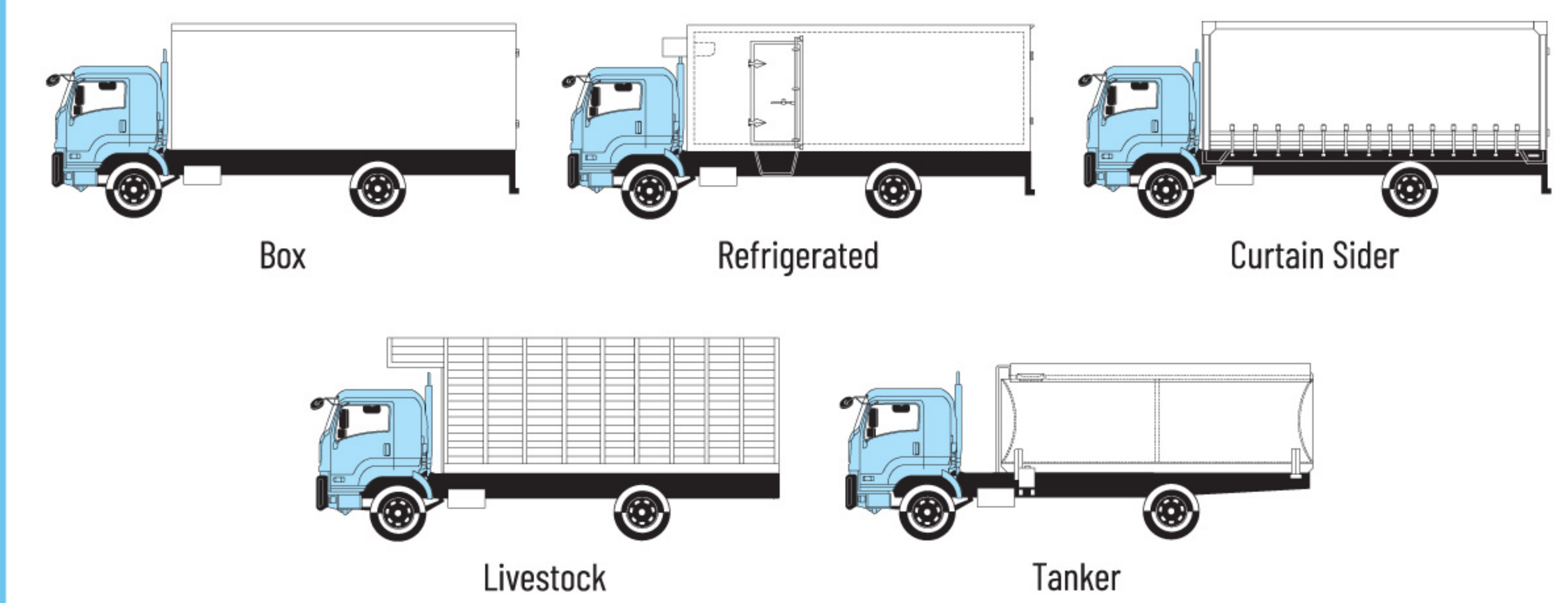
## FVR300

MODEL CODE		FVR34UU-MD	FVR34UU-SD	FVR34UU-ST2
Drive Train		4 x 2		
<b>ENGINE</b>				
Model		6HK1-TCN		6HK1-TCS
Type		6 Cylinders In-line, 4 Cycle, Water-Cooled OHC, Turbo with Intercooler		
Displacement		cc		
Maximum Output (Gross)		177 (240) @ 2,400		221 (300) @ 2,400
Maximum Torque		706 (72) @ 1,450		986 (100) @ 1,450
Emission Level		Euro 2		Euro 3
Fuel System		Common Rail Direct Injection		
<b>TRANSMISSION</b>				
Model / No. of Speed		ISUZU MZW6P / 6-Speed Manual		Eaton ES1109 / 9 Speed
Gear Ratio		C		-
		1st		6.615
		2nd		4.095
		3rd		2.358
		4th		1.531
		5th		1.000
		6th		0.722
		7th		-
		8th		-
		Reverse		6.615
		Final		6.143
				12.638
				8.807
				6.550
				4.768
				3.548
				2.482
				1.846
				1.344
				1.000
				13.210
				4.556
<b>WEIGHT &amp; CAPACITIES</b>				
Gross Vehicle Weight		kg		
Fuel Tank Capacity		l		200
				400
<b>AXLE</b>				
Front		Type		
Front Axle Capacity (Design)		kg		
Rear		Type		
Rear Axle Capacity (Design)		kg		
		Reverse Elliot, I-Beam		
		7,500		
		Banjo, Full Floating		
		13,000		
<b>SUSPENSION SYSTEM</b>				
Suspension		Front		
		Rear		
		Semi Elliptical Alloy Steel Leaf Springs, Hydraulic Double Acting Telescopic Shock Absorber		
		Semi Elliptical Alloy Steel Leaf Springs		
<b>TYRES &amp; WHEELS</b>				
Tyres		295 / 80R22.5		
Wheels		22.5 x 8.25 (ISO 10 Studs)		
<b>BRAKES</b>				
Service		Full Air with Anti Lock Braking System (ABS), Auto Adjuster		
Parking Brake Type		Spring Acting, Rear Wheel Parking		
Auxiliary		Exhaust Brake		
<b>STEERING</b>				
Steering System		Power assisted, Hydraulic Integral, Recirculating Ball, Energy absorbing, Tilt & Telescopic Column		
Min. Turning Radius		m		7.7
				9.9
<b>ELECTRICAL</b>				
Battery		12V x 2		
Alternator		24V-60A		
<b>DIMENSION</b>				
Overall Length		OAL mm		8,005
Overall Width		OAW mm		2,490
Overall Height		OAH mm		2,900
Wheelbase		WB mm		4,660
Front Overhang		FOH mm		1,255
Rear Overhang		ROH mm		2,090
Front Tread		AW mm		2,065
Rear Tread		CW mm		1,850

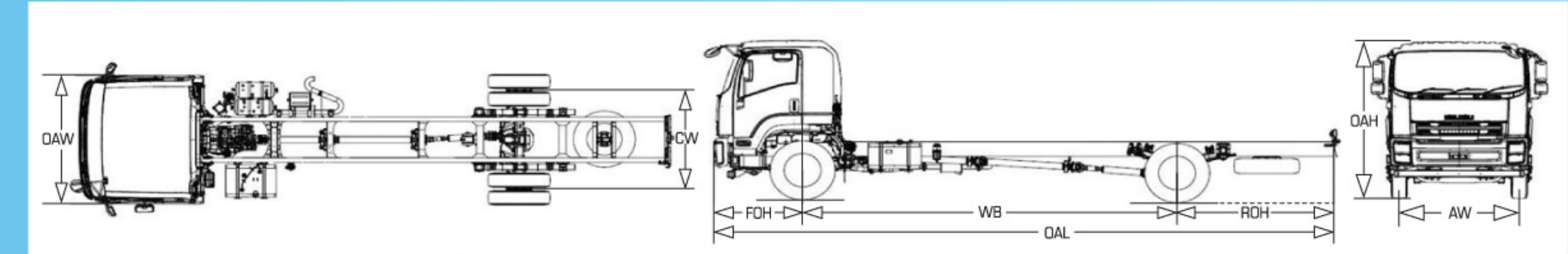
# BODY APPLICATION



MODEL		FVR240	FVR300	
		FVR34UU-MD	FVR34UU-SD	FVR34UU-ST2
Standard	ft	20*	27*	27*



\*Body length may vary according to rear body type application. Refer to ISUZU authorised drawing plan for actual body length at ISUZU dealers. Pictures shown are for illustration purposes only.



Isuzu Malaysia Sdn. Bhd. is engaged in an ongoing research and development programme, and reserves the right to change specifications, resulting in advancements or technical refinements, without prior notice. All product specifications are within normal manufacturing allowances and tolerances.

Dealer's information